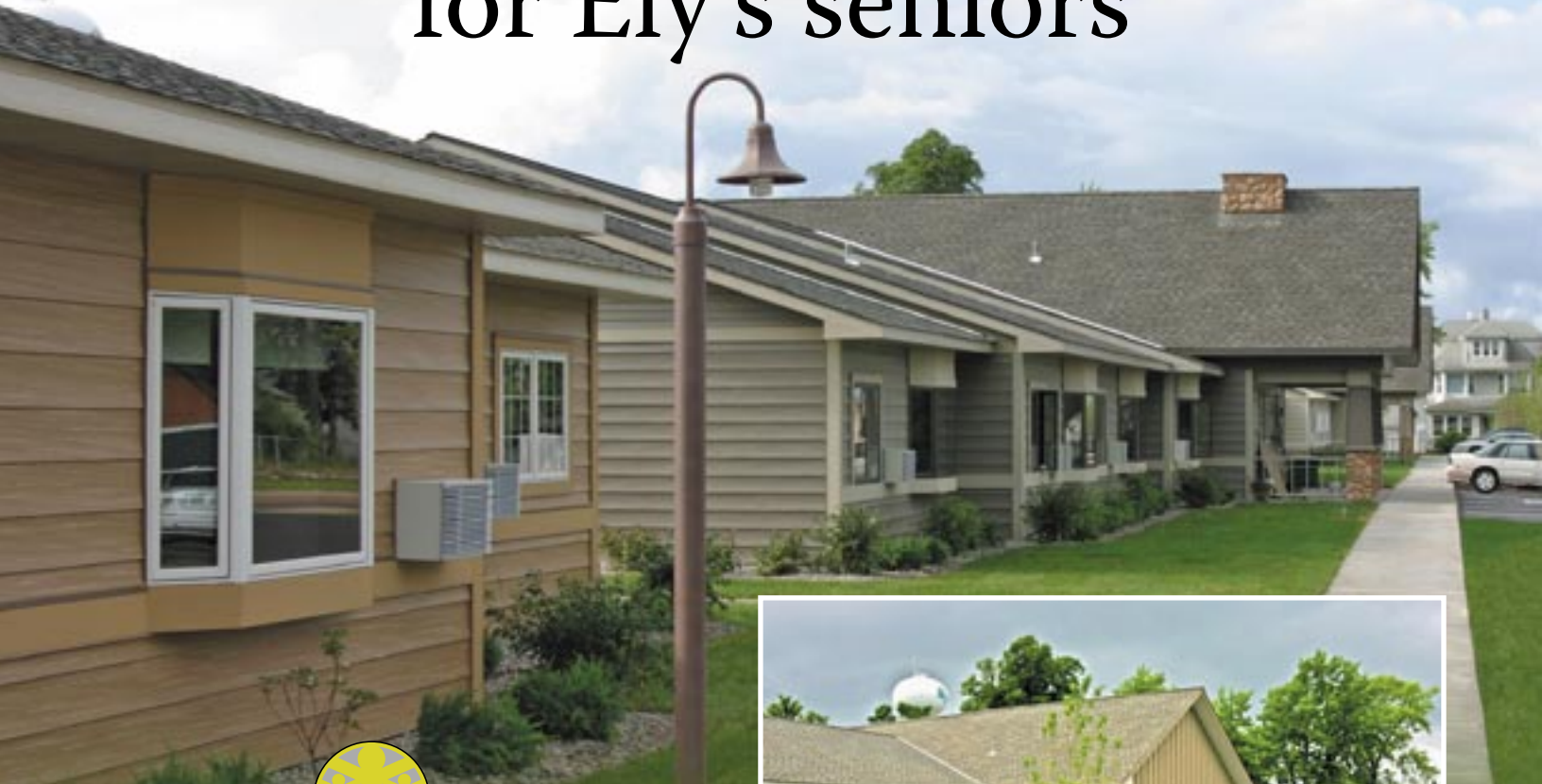


Now there's a choice for Ely's seniors



SPECTRUM HOUSE ELY

www.spectrum-ely.com

*A Spectrum
Health
Company*



Senior citizens in the Ely area now have a choice when it comes to their living accommodations – if they can't remain in their current homes. Located next to the Ely Bloomenson Hospital, **Spectrum House Ely** features **three separate homes – senior apartments, assisted living and memory care**. Each home offers all of the services that the Spectrum Health family has become known for.

With offices throughout Minnesota, **Spectrum Health Company** has vast experience in providing home care and assisted living services.

Since 2004, Spectrum has also operated **Lakeside Manor**, an 8-person assisted living home on Shagawa Lake. Additionally, they offer home care services at the Sibley Apartments and throughout the Ely area.

140 2nd Ave. W, Ely, MN 55731 • (218) 365-2261

SENIOR APARTMENTS • ASSISTED LIVING • MEMORY CARE



Senior Apartments

Spectrum House - Ely offers three separate homes, with the first featuring 14 apartment units for up to 28 residents.

Apartments feature either 1-bedroom or efficiencies. Each has a spacious kitchen, dining room, living room and a safety-conscious bathroom. The home has laundry facilities and a dining room for socialization and visitors.

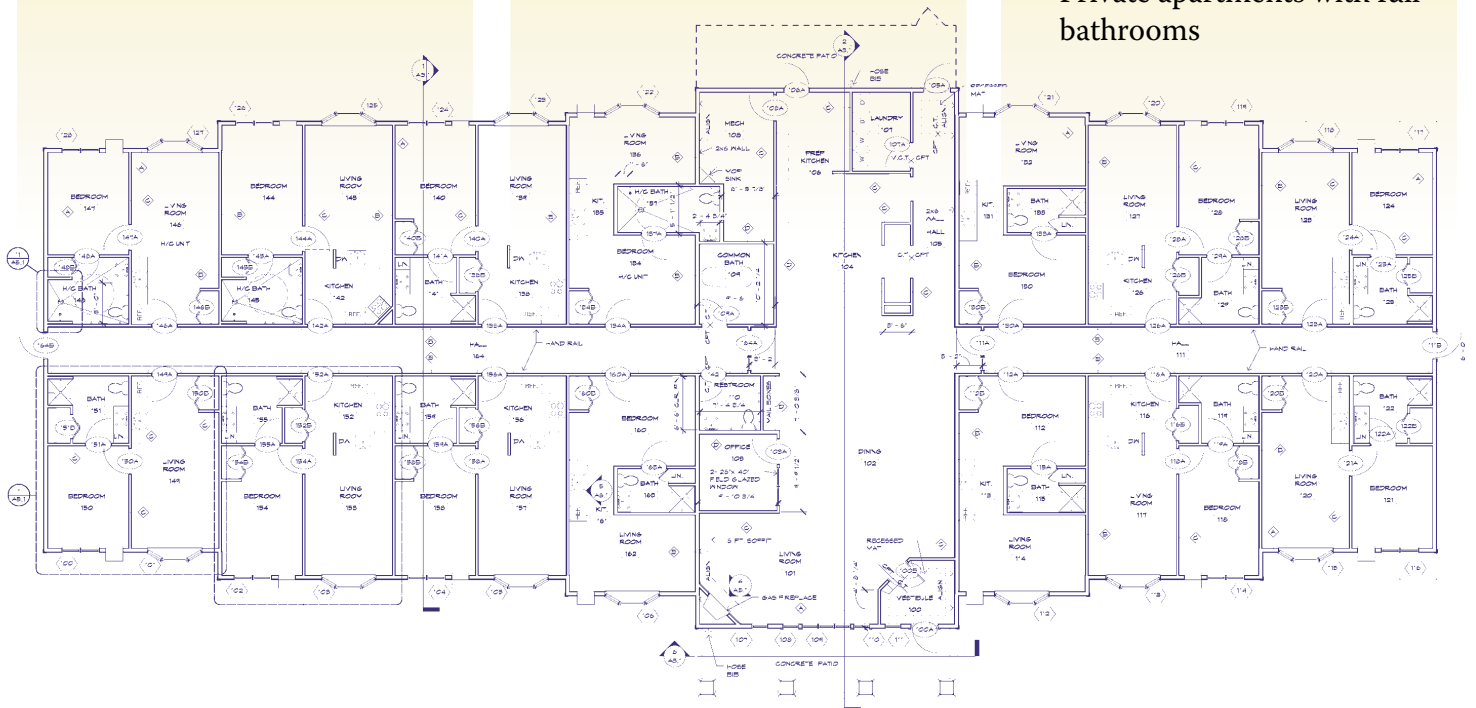
Parking is available for residents with vehicles and some services are available for residents who prefer home care or housekeeping services.

Assisted Living

- 24-hour staffing
- Medication administration: injection assistance, insulin including Lantus
- Skilled nurse visits
- Three meals and three snacks daily
- Special diets
- Personal care: bathing, dressing, grooming, toileting, transfers with 1 assist
- Full housekeeping and laundry service
- Socialization & activity program with daily scheduled events and various outings
- Private apartments with full bathrooms

Memory Care

- 24-hour staffing
- Home is secure
- Medication administration: injection assistance, insulin including Lantus
- Skilled nurse visits
- Three meals and three snacks daily
- Special diets
- Personal care: bathing, dressing, grooming, toileting, transfers with 1 assist
- Full housekeeping and laundry service
- Specialized memory care socialization
- Activity program with daily scheduled events
- Private apartments with full bathrooms



Each of the three homes in the new Spectrum House Ely have a similar – but not identical – floorplan. The plan shown here is for the assisted living building and features a simple floorplan with nice-sized living quarters and lots of room for residents to socialize without being so large as to make moving about difficult.

Spectrum House Ely • 140 2nd Ave. West, Ely, MN 55731 • (218) 365-2261 • www.spectrum-ely.com